



120W (1/6 HP)

BRAKE MOTORS Frame size 90mm sq. (3.54 in. sq.)

Single-Phase, Three-Phase

LEAD WIRE TYPE

SPECIFICATIONS

30MIN. DUTY, INSULATION CLASS A or E, 4POLES

Model	Output		Voltage (V)	Frequency (Hz)	Rated						Starting Torque			Magnetic Brake			Capacitor (μ F)	
	(HP)	(W)			Input (W)	Current (A)	Torque			Speed (rpm)	(kg-cm)	(N-m)	(oz-in)	Torque				Current (A)
							(kg-cm)	(N-m)	(oz-in)					(kg-cm)	(N-m)	(oz-in)		
L9R120□C HE	1/6	120	1 \varnothing 100	50	280	2.5	9.4	0.921	130.04	1250	7.5	0.735	104.15	10	0.980	138.87	0.11	40
60				280	2.6	7.6	0.745	105.54	1550	7.5	0.735	104.15	10	0.980	138.87	0.11		
L9R120□D HE	1/6	120	1 \varnothing 200	50	280	1.20	9.4	0.921	103.04	1250	7.5	0.735	104.15	10	0.980	138.87	0.11	10
60				280	1.32	7.6	0.745	105.54	1550	7.5	0.735	104.15	10	0.980	138.87	0.11		
L9R120□B HE	1/6	120	1 \varnothing 220	60	280	1.25	7.6	0.745	105.54	1550	8.5	0.833	118.04	10	0.980	138.87	0.11	9
L9R120□E HE	1/6	120	1 \varnothing 115	60	280	2.6	7.4	0.725	102.76	1600	7	0.686	97.21	10	0.980	138.87	0.11	30
L9R120□X HE	1/6	120	1 \varnothing 220~240	50	280	1.15	9.4	0.921	130.54	1250	8.3	0.813	115.26	10	0.980	138.87	0.11	9
L9I120□U HE	1/6	120	3 \varnothing 200~230	50	200	0.71	8.7	0.853	120.82	1350	22	2.156	305.51	10	0.980	138.87	0.11	-
60				200	0.67	7.6	0.745	105.54	1550	17	1.666	236.08	10	0.980	138.87	0.11		
L9I120□T HE	1/6	120	3 \varnothing 220	50	240	0.88	8.7	0.853	120.82	1350	27	2.646	374.95	10	0.980	138.87	0.11	-
60				240	0.82	7.4	0.725	102.76	1600	21	2.058	291.63	10	0.980	138.87	0.11		
L9I120□S HE	1/6	120	3 \varnothing 380~415	50	240	0.51	8.7	0.853	120.82	1350	27	2.646	374.95	10	0.980	138.9	0.11	-
60				240	0.48	7.4	0.725	102.76	1600	21	2.058	291.63	10	0.980	138.9	0.11		

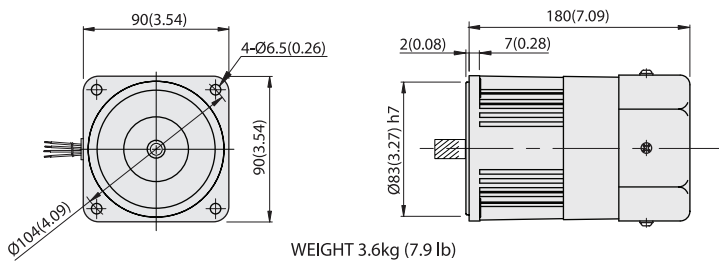
- * Model in grey screen represents the motors with THERMALLY PROTECTED according to UL regulation.
- * Model in dark grey screen represents the motors with THERMALLY PROTECTED according to CE regulation.
- * In case of some models certificated for export, the special cord like CE or UL is added after the existing model no. ex) L9I60 □XHE-UL, L9I60 □EHE-UL.
- * Insulation class for motors which acquired certificates for export is B.

BRAKE MOTORS

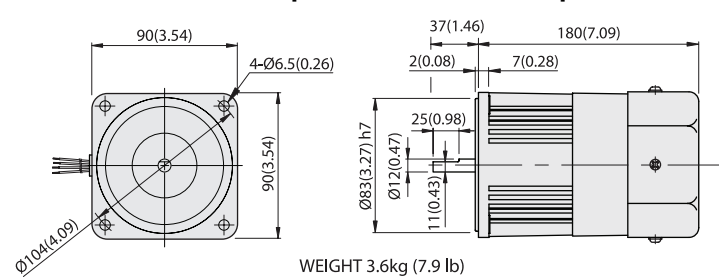
DIMENSIONS

Unit : mm(inch)

L9R120P□HE(1ph) / L9I120P□HE(3ph)

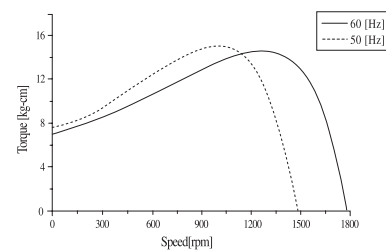


L9R120D□LE(1ph) / L9I120D□LE(3ph)

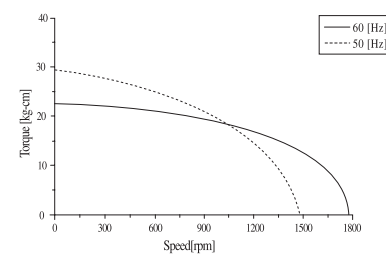


SPEED-TORQUE CURVE

Single phase L9R120□□HE



Three phase L9I120□□HE

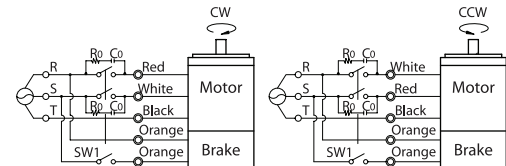
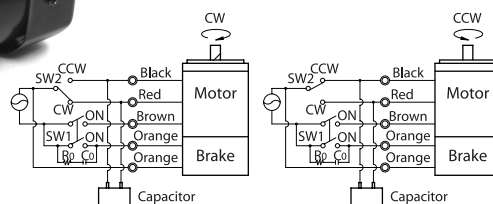
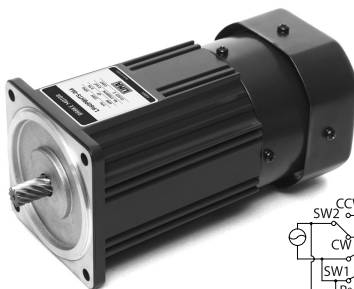


CONNECTION DIAGRAMS

Standard or with T.P

Single Phase

Three Phase



The direction of rotation is seen from the end of motor shaft.